

RYE STREET MARKET

PRE-BUILT OFFICE SUITES



**BALTIMORE
PENINSULA**



BALTIMORE PENINSULA

HOME TO CHANGEMAKERS AND INNOVATORS

Anchored by the global Headquarters of Under Armour and City Garage, Baltimore Peninsula is cultivating a hub to nurture creativity, embrace collaboration, and spark the kind of innovation that raises everyone up, creates jobs and opens doors.

Baltimore's hotbed of talent is ready to contribute their passion and expertise to transform unlimited potential into reality.

With Class-A offerings for tenants of every size and type, Rye Street Market has full-floor spaces and boutique pre-built suites for growing companies.

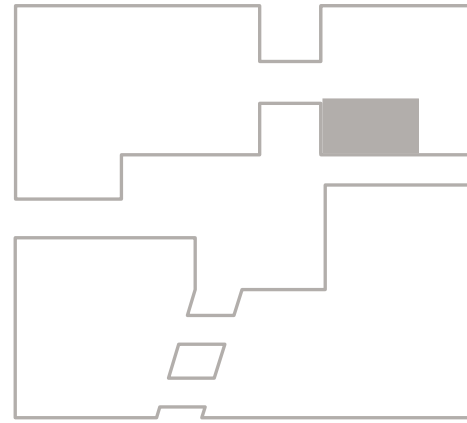
RYE STREET MARKET: DESIGNED FOR CREATORS

Well-crafted and artfully designed with a center courtyard by Morris Adjmi Architects, Rye Street Market is the heart and soul of Baltimore Peninsula.

Built for a workforce seeking a lively urban vibe that looks and feels like Baltimore, Rye Street Market features boutique space and pre-built suites for companies of all sizes.



ACCESS TO AMENITIES



Teams can enjoy a creative work environment with access to a community of amenities:

- Park, City and Courtyard Views
- Fitness Center
- Central Courtyard
- FITWEL-CERTIFIED
- Shared Conference Rooms
- Shared Kitchenette
- Bike Storage
- Event Spaces
- Ample Parking

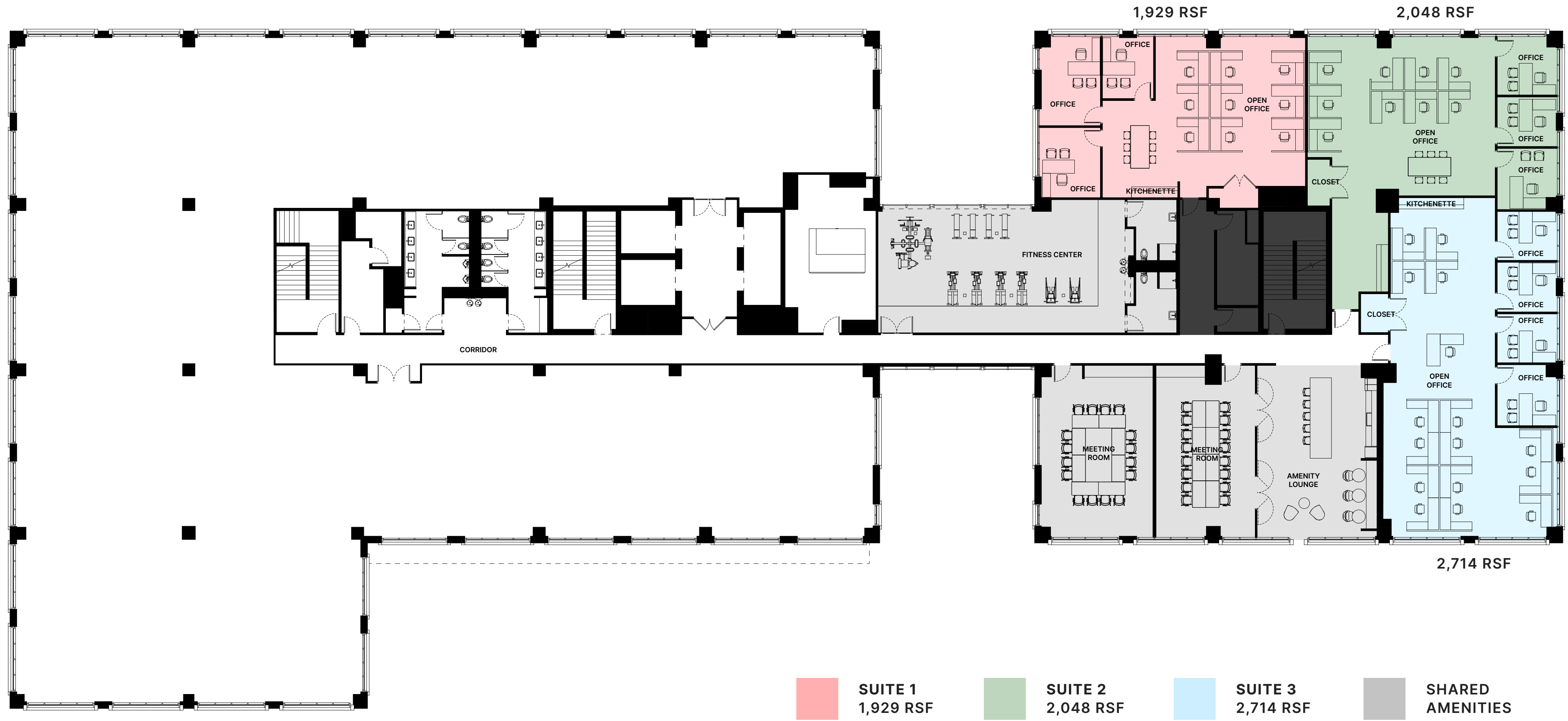


SHARED KITCHEN, CONFERENCE ROOMS AND FLEXIBLE WORKSPACE



PRE-BUILT SPACES: BUILDING 1, LEVEL 2

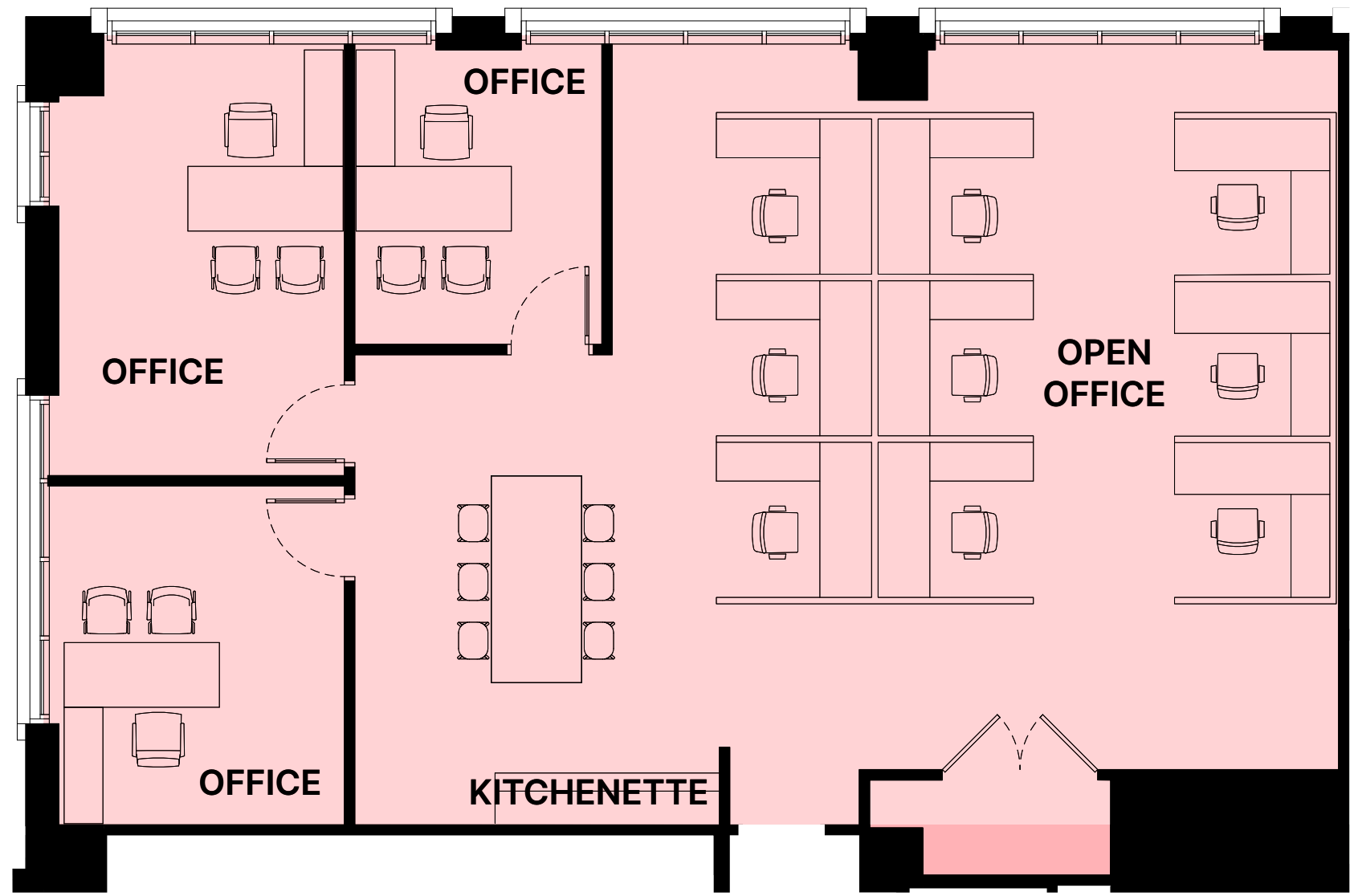
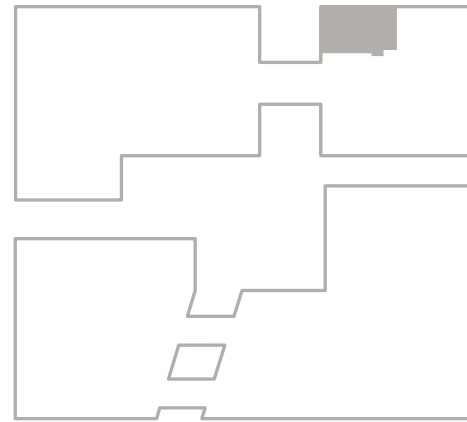
- High-end Finishes
- Conference Spaces
- Work Rooms
- Park, City and Courtyard Views
- Adjacent to Amenity Lounge and Fitness Center



PRE-BUILT SPACES

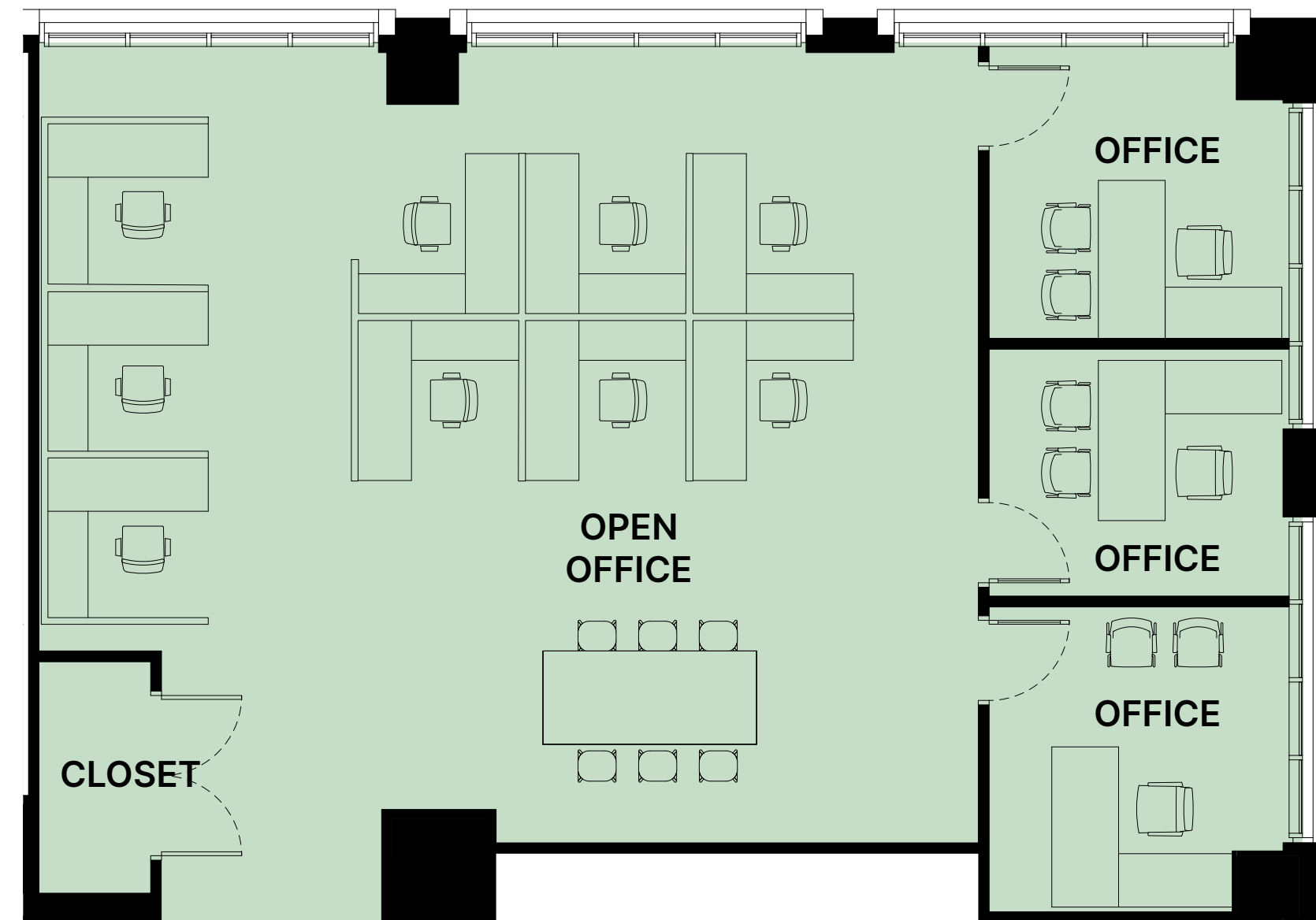
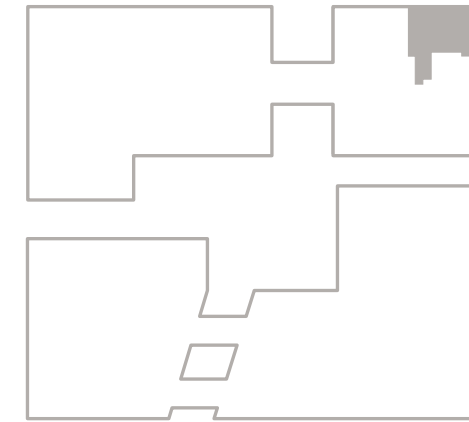
SUITE 1

1,929 RSF



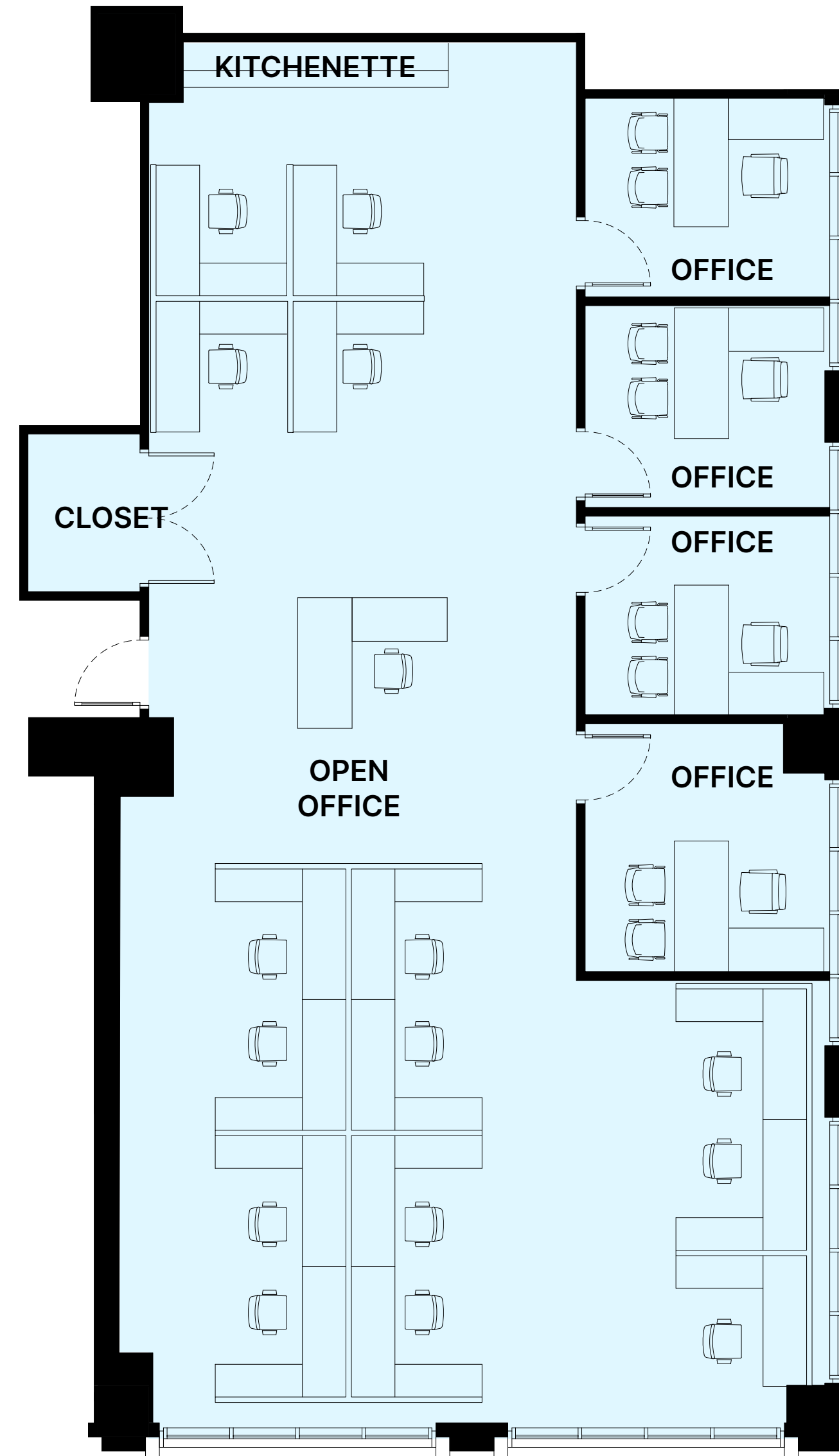
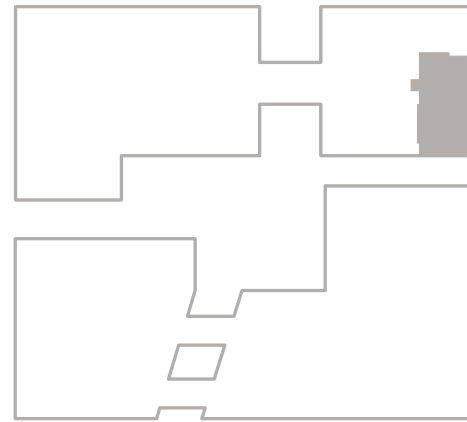
SUITE 2

2,048 RSF



PRE-BUILT SPACES

SUITE 3
2,714 RSF



FOR MORE LEASING INFORMATION, PLEASE CONTACT:

SCOOTER MONROE

410-689-9717

smonroe@magpartners.com

TONY GROSS

443-931-3333

tony.gross@jll.com

ANNE MARIE PAINTSIL

443-931-3351

annemarie.paintsil@jll.com

**BALTIMORE
PENINSULA**